

# *Raemi***BURG**

TEMPORARY!



#EIN SCHLOSS  
FÜR DEINE  
IDEEN



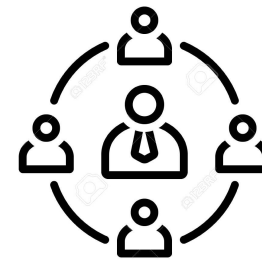
## **FIX OFFICE**

- rental of office space for a specific period
- Furnished or unfurnished
- Meeting room for co-use



## **CO-WORKING**

- Individual leasing of workplaces and shared offices
- Furnished
- Meeting room for co-use



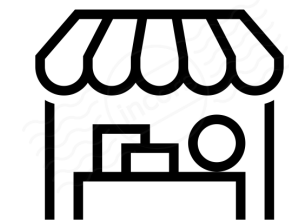
## **ACTIVITY & MEETING**

- Meeting room for individual rental or regular use.



## **POP-UP STORE**

- Pop-up store with front to the courtyard and storage area in the basement



## **POP-UP MARKET**

- Defined outside area in the courtyard for use as a marketplace.



# ／ BUILDING

The historic Raemiburg building is located in the heart of Zurich, right next to the Kunsthaus and Schauspielhaus.





# ／ HISTORY

As a former sausage factory, the property exudes a charm that is second to none. A unique property.





# FLOORPLAN POP-UP MARKET

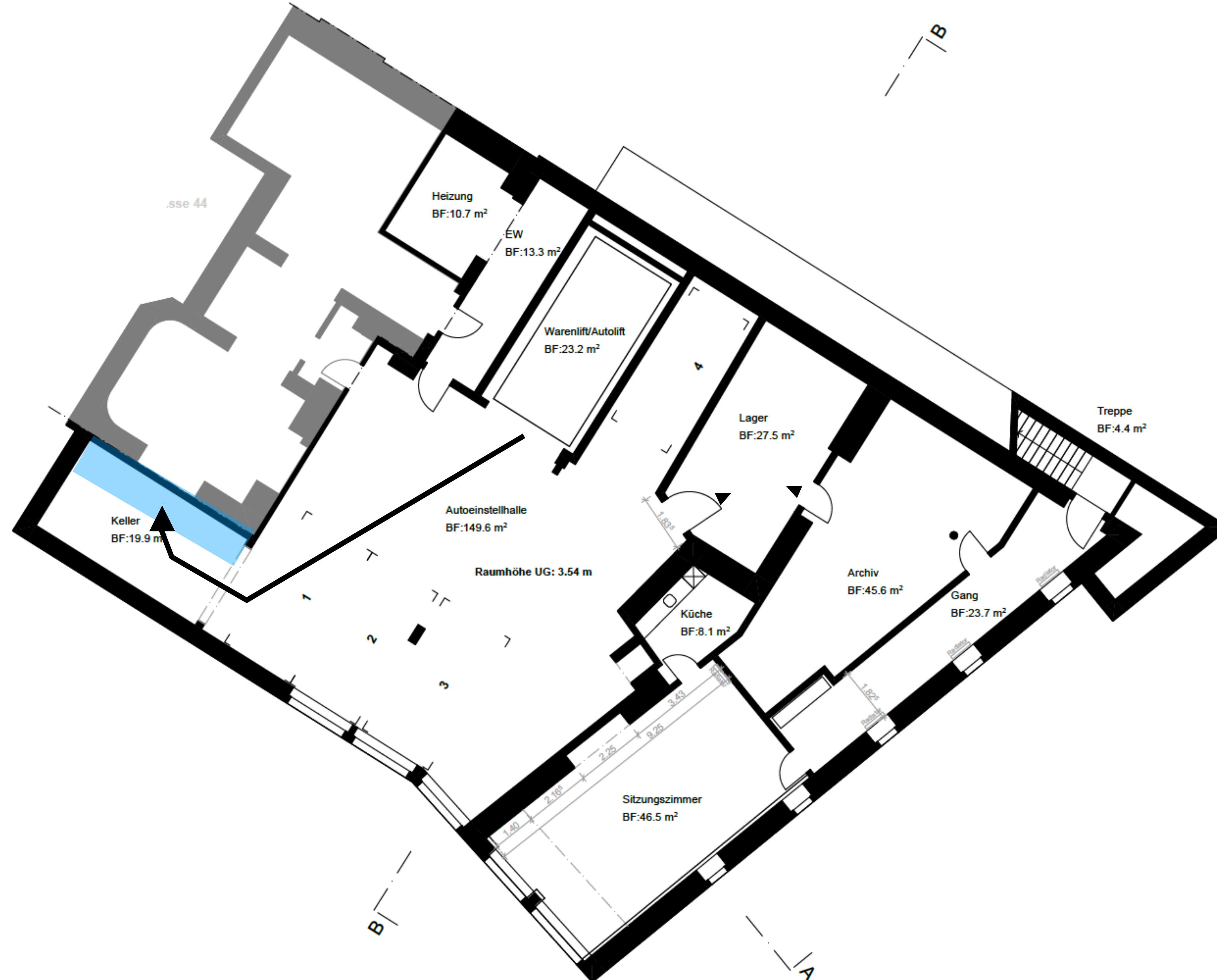
ENTRANCE / GUESTFLOW

ca. 5.00m  
ca. 20.00m<sup>2</sup>  
ca. 4.00m

16 CEE

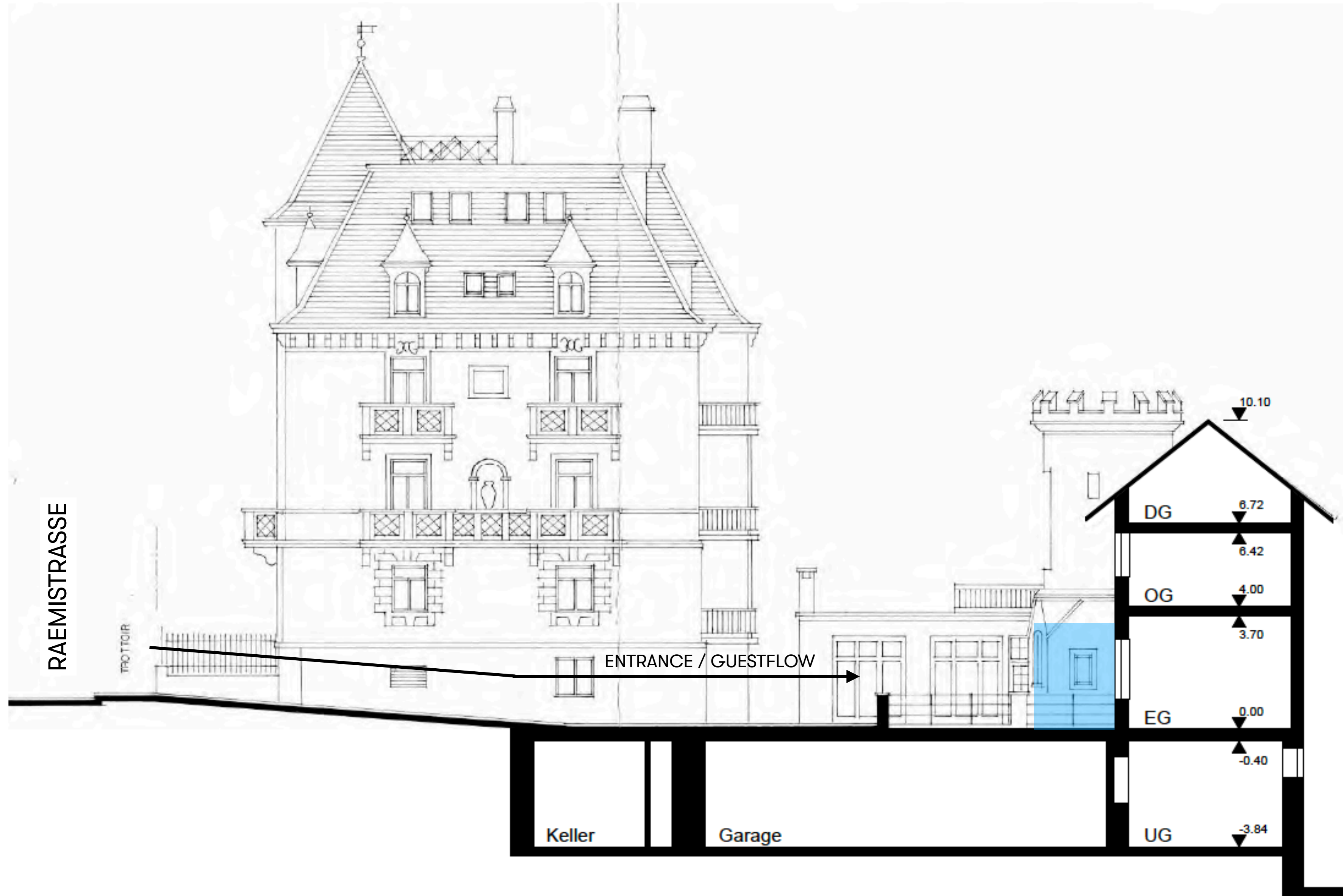


# ／ FLOORPLAN BASEMENT STORAGE AREA





# PROFILE POP-UP STORE





# OVERVIEW SITUATION POP-UP STORE





# ／ DETAILS POP-UP MARKET





# DETAILS STORAGE



LIFT STORAGE



STORAGE WITH SHELVES



## FACTS & FIGURES

Construction year:	1887
Total building area	986m <sup>2</sup>
Last complete renovation	1999
Condition	good

## EQUIPMENT

- WLAN high speed access
- Power access 16 CEE
- Water access cold
- Storage area ca. 5m<sup>2</sup> unlocked
- Branding possibility on outside front

## CONTRACT CONDITIONS

- Rental time: 07.00h - 16.00h
- No long-term parking on site
- Availability: immediately or by agreement
- Rent per month in advance excluding VAT & excluding additional costs

## SPACE

Pop-up market outdoor	20.00 m <sup>2</sup>
Storage basement.	5.00 m <sup>2</sup>

## COSTS

### Rental fee / day

**95.00 CHF**

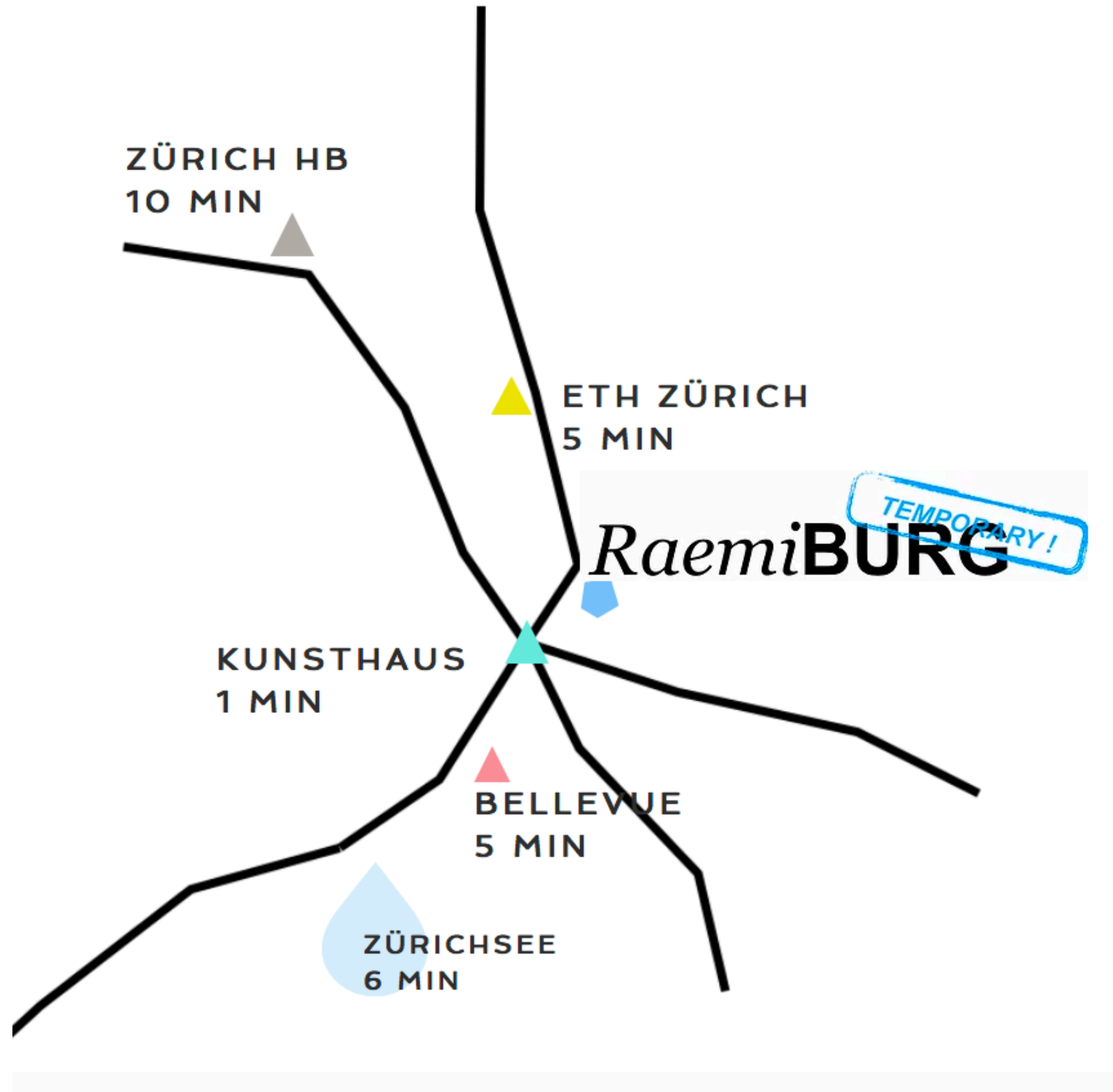
- excl. VAT
- excl. additional costs (water / power)
- Currency: Swiss Franc CHF



# SITUATION

## WELL CONNECTED

The Raemiburg is right next to the Kunsthaus, at Raemistrasse 46. Well connected with tram lines 3, 5, 9 and 11 as well as bus lines 31 & 33, the transport hubs Bellevue, Zurich HB and Stadelhofen train station can be reached in around 5 -10 minutes.





**RAEMIBURG TEMPORARY**

**RAEMISTRASSE 46**

**CH\_8001 ZÜRICH**

**MAIL@RAEMIBURG.CH**

**WWW.RAEMIBURG.CH**



*Raemi***BURG**

TEMPORARY!